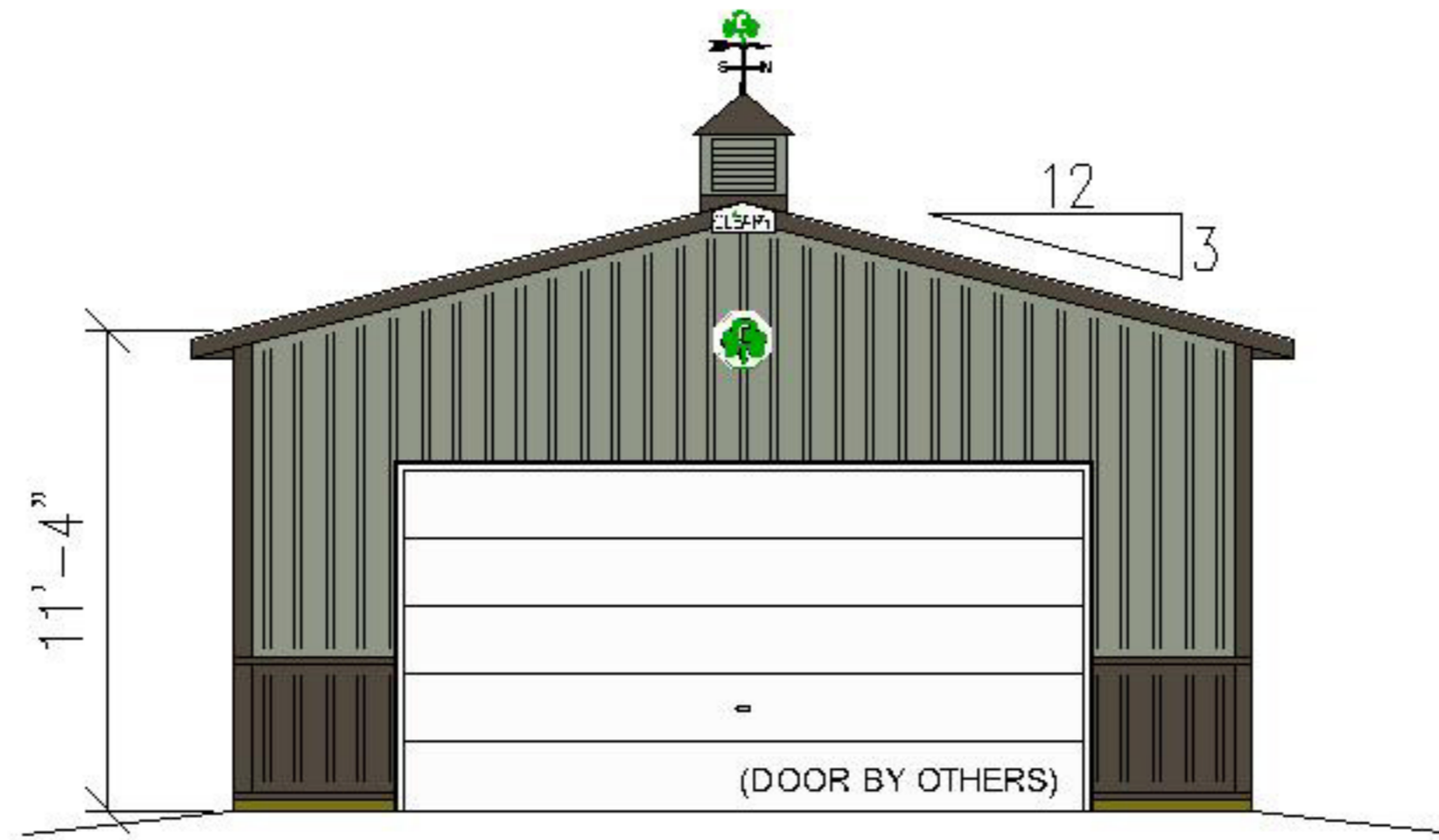
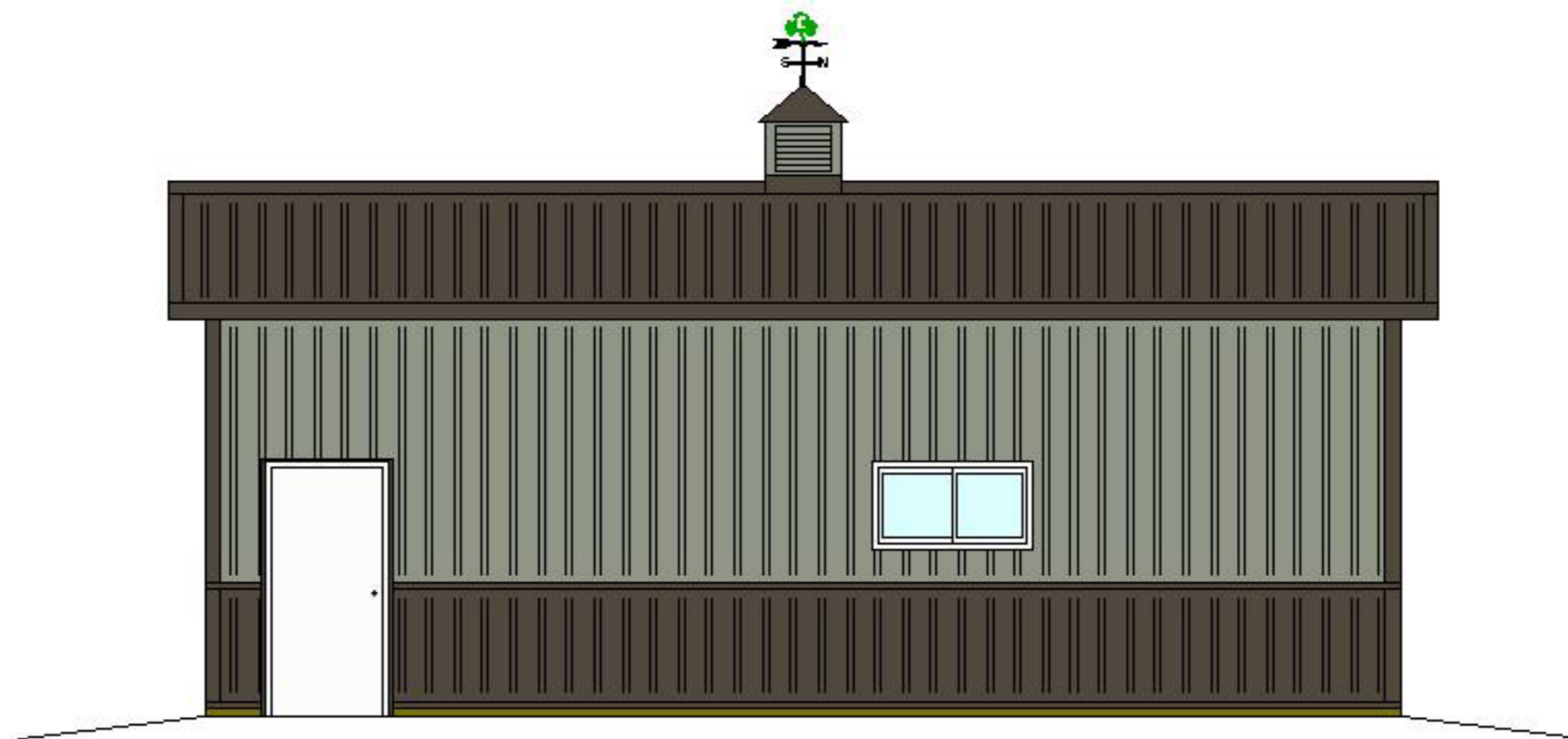


24'x32'x11'-4"

SUBURBAN BUILDING WITH LINER AND INSULATION PACKAGE



END ELEVATION



SIDE ELEVATION

BUILDING COLORS:
ROOF: ANTIQUE BRONZE
SIDES: LIGHT GRAY
TRIM: ANTIQUE BRONZE
WAINSCOTING: ANTIQUE BRONZE

